

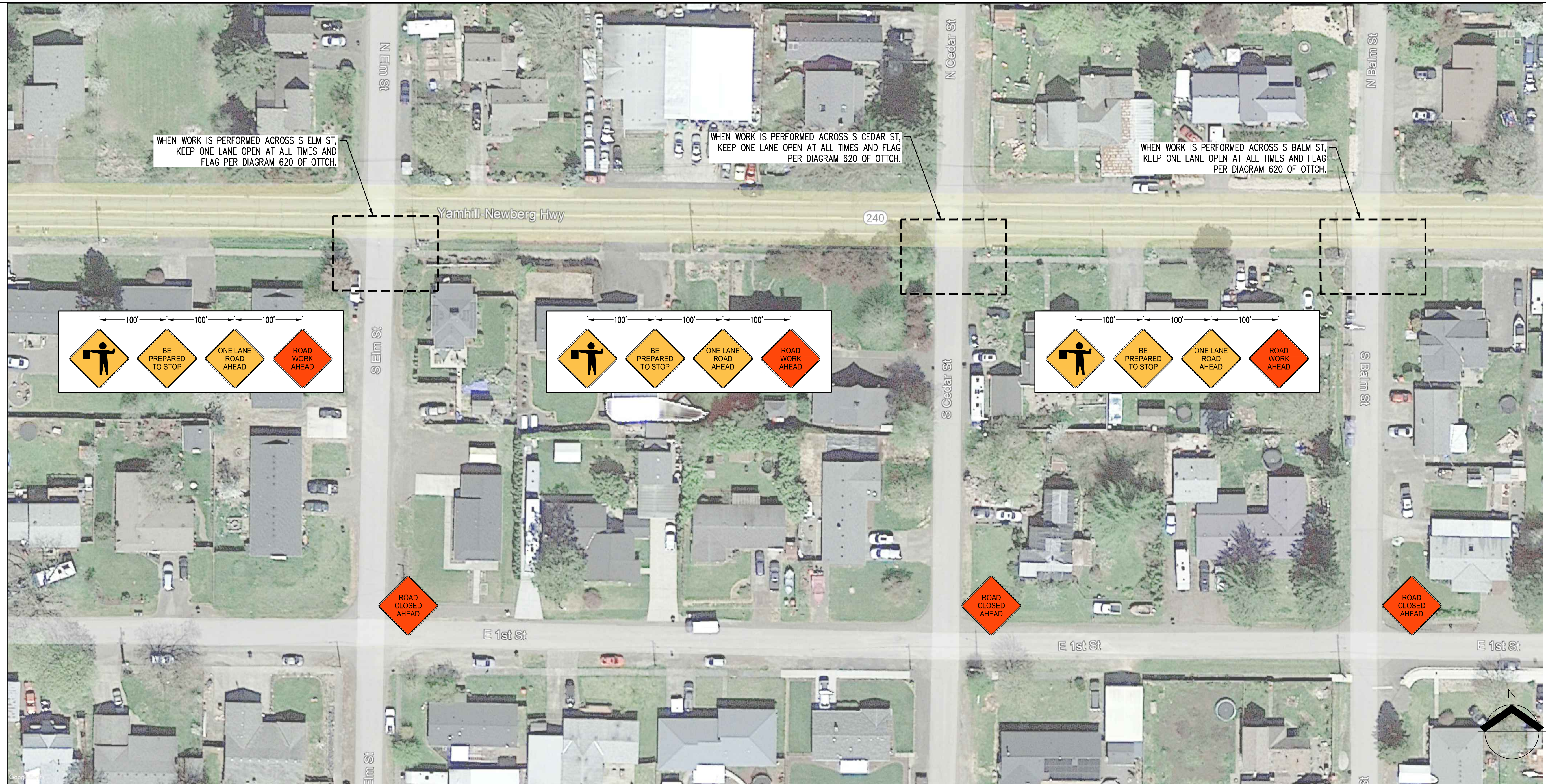
**HWY 240 WATER VALVE
 REPLACEMENT PROJECT
 YAMHILL OREGON**

**TEMPORARY TRAFFIC
 CONTROL PLAN**

DESIGNED BY: LAH
 DRAWN BY: LAH
 MANAGED BY: JAW
 CHECKED BY: JAW
 DATE: 08/02/2023

REVISIONS

 JOB NUMBER
 SHEET



TRAFFIC CONTROL SEQUENCING NOTES:

1. THE TRAFFIC CONTROL DEPICTED IN THE PLAN IS SPECIFIC TO THE WORK BEING PERFORMED WITHIN THE AREAS ILLUSTRATED IN THE PLANS.
2. TRAFFIC CONTROL MEASURES WILL BE REMOVED AT THE COMPLETION OF WORK WITHIN EACH WORK ZONE ILLUSTRATED IN THE PLANS.

TRAFFIC CONTROL NOTES:

1. ALL TEMPORARY TRAFFIC CONTROL SHALL MEET THE REQUIREMENTS OF THE MOST CURRENT EDITION OF THE MANUAL ON UNIFORM TRAFFIC CONTROL DEVICES FOR STREETS AND HIGHWAYS (MUTCD) AND THE OREGON TEMPORARY TRAFFIC CONTROL HANDBOOK (OTTCH).
2. ALL TRAFFIC CONTROL MEASURES MUST ALLOW FOR TRAFFIC TO FUNCTION PROPERLY, SUBJECT TO CITY REVIEW.
3. CITY RESERVES THE RIGHT TO ADJUST TRAFFIC CONTROL MEASURES FOR SAFETY OR TRAFFIC FUNCTIONALITY.
4. POSTED SPEED LIMIT ON HWY 240, ELM ST, CEDAR ST, AND BALM ST IS 25 MPH.
5. SPACING OF TRAFFIC CONTROL MEASURES ARE NOT TO SCALE.

**TEMPORARY TRAFFIC
 CONTROL LEGEND**

